



**SCOTTISHPOWER  
RENEWABLES**

# **East Anglia TWO Offshore Windfarm**

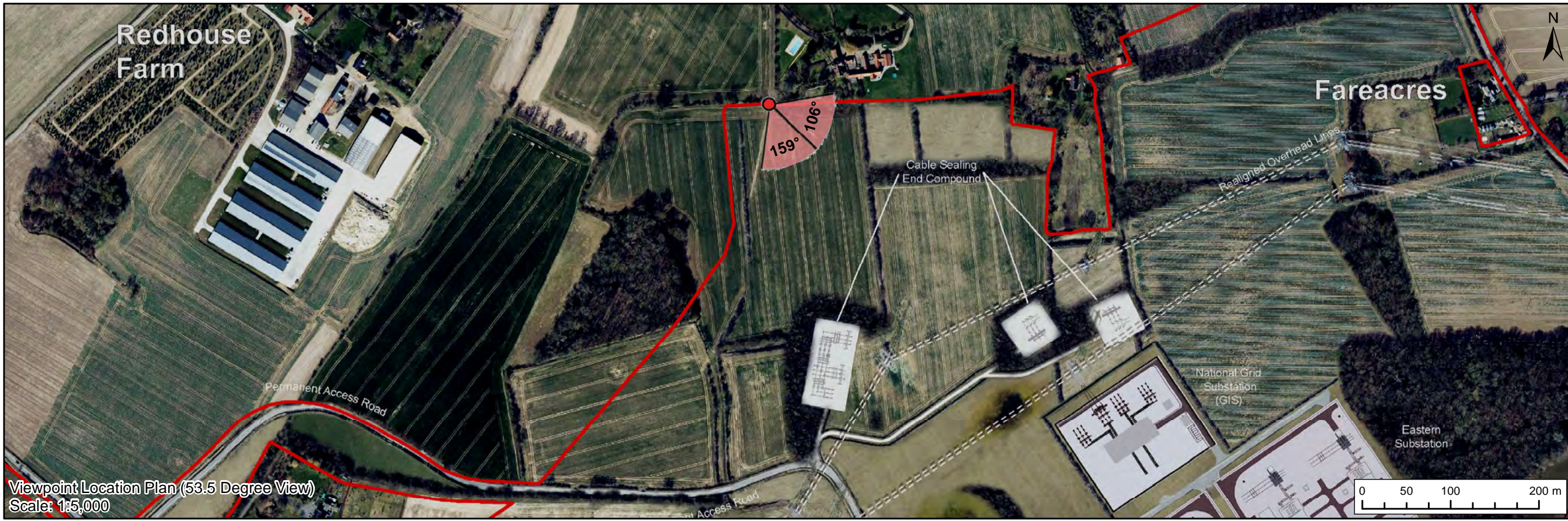
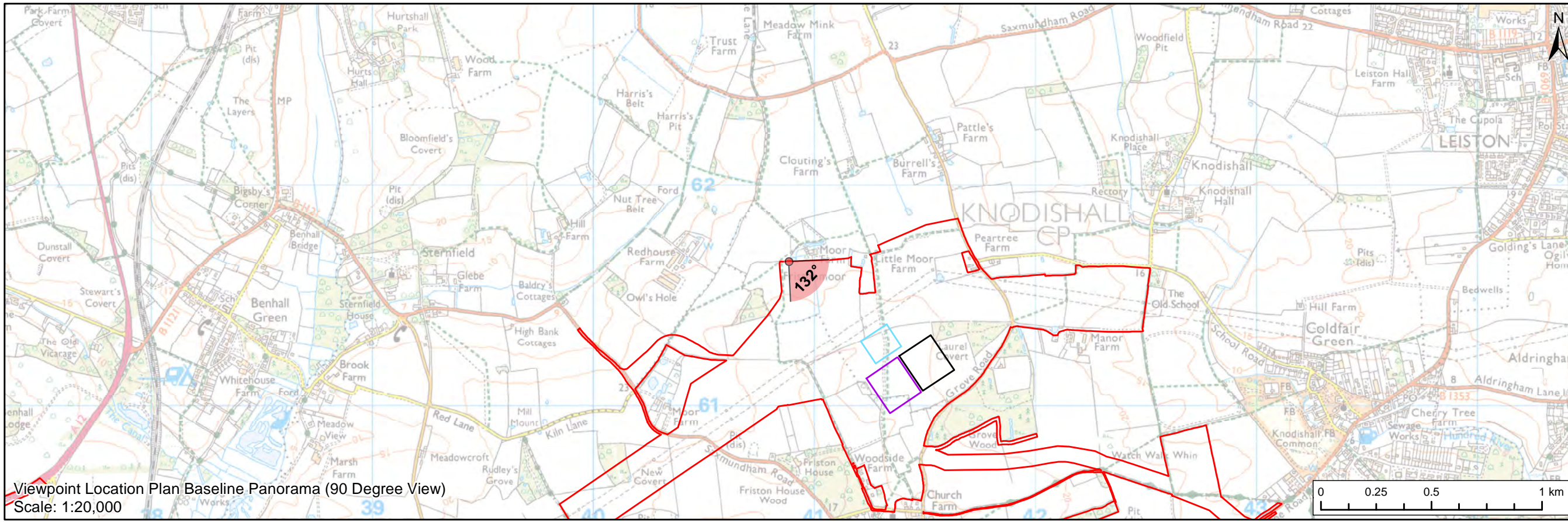
## **Figure 29.37**

**Viewpoint 5 Public Rights of Way, near  
Moor Farm (with National Grid GIS  
Substation)**

Applicant: East Anglia TWO Limited  
Document Reference: ExA.AS-6.D7.V1  
SPR Reference: EA2-DWF-ENV-REP-IBV-000921 Rev 01

Date: 4<sup>th</sup> March 2021  
Revision: Version 1  
Author: Shepherd and Wedderburn LLP

**Applicable to  
East Anglia TWO**



**Legend**

- East Anglia ONE North and East Anglia TWO Onshore Development Area
- Eastern Substation (190m x 170m)
- Western Substation (190m x 170m)
- Indicative National Grid GIS Substation Location

**Viewpoint:**

- 90 Degree Field of View Viewpoint
- 53.5 Degree Field of View Viewpoint



Prepared:	LA	Scale @ A3
Checked:	SM	
Approved:	LT	

Source: © Crown copyright and database rights 2020. Ordnance Survey 100031972.  
This map has been prepared to the latest known information at the time of issue, and has been prepared for your information only. Please consult with the SPN Onshore GIS team to ensure the content is fit for purpose before using the information contained on this map. In the absence of any other information, we accept no responsibility or liability, whether in contract, tort (including negligence) or otherwise in respect of any errors or omissions in the information contained in the map and shall not be liable for any loss, damage or expense caused by such errors or omissions.

**East Anglia TWO**  
Viewpoint 5: Public Right of Way, near Moor Farm

<b>(Figure 29.37 - GIS Update)</b>		
Rev	1	Coordinate System: BNG Datum: OSGB36
Date	25/03/21	
Figure	29.37a	



Baseline Photograph (53.5 Degree Field of View)

View flat at a comfortable arm's length

OS reference: 640884 E 261654 N  
Eye level: 25 m AOD  
Direction of view: 105.65°

Horizontal field of view: 53.5° (planar projection)  
Principal viewing distance: 812.5 mm  
Paper size: 841 x 297 mm (half A1)  
Correct printed image size: 820 x 260 mm

Camera: Canon EOS 5D Mark II  
Lens: 50mm (Canon EF 50mm f/1.4)  
Camera height: 1.5 m AGL  
Date and time: 22/02/2020, 13:47:28

Contains Ordnance Survey digital data © Crown copyright, All rights reserved 2020 Licence number 0100031673

Figure: 29.37a  
Viewpoint 5: Public Right of Way, near Moor Farm



Baseline Photograph (53.5 Degree Field of View)

View flat at a comfortable arm's length

**OS reference:** 640884 E 261654 N  
**Eye level:** 25 m AOD  
**Direction of view:** 159.15°

**Horizontal field of view:** 53.5° (planar projection)  
**Principal viewing distance:** 812.5 mm  
**Paper size:** 841 x 297 mm (half A1)  
**Correct printed image size:** 820 x 260 mm

**Camera:** Canon EOS 5D Mark II  
**Lens:** 50mm (Canon EF 50mm f/1.4)  
**Camera height:** 1.5 m AGL  
**Date and time:** 22/02/2020, 13:47:28

Contains Ordnance Survey digital data © Crown copyright, All rights reserved 2020 Licence number 0100031673

**Figure: 29.37a**  
**Viewpoint 5: Public Right of Way, near Moor Farm**



Visual representation of 1st year of operational phase  
 Photomontage of the proposed eastern substation and National Grid GIS substation

View flat at a comfortable arm's length

<b>OS reference:</b>	640884 E 261654 N	<b>Horizontal field of view:</b>	53.5° (planar projection)	<b>Camera:</b>	Canon EOS 5D Mark II
<b>Eye level:</b>	25 m AOD	<b>Principal viewing distance:</b>	812.5 mm	<b>Lens:</b>	50mm (Canon EF 50mm f/1.4)
<b>Direction of view:</b>	105.65°	<b>Paper size:</b>	841 x 297 mm (half A1)	<b>Camera height:</b>	1.5 m AGL
		<b>Correct printed image size:</b>	820 x 260 mm	<b>Date and time:</b>	22/02/2020, 13:47:28

Contains Ordnance Survey digital data © Crown copyright, All rights reserved 2020 Licence number 0100031673

**Figure: 29.37b**  
 Viewpoint 5: Public Right of Way, near Moor Farm



Visual representation of 1st year of operational phase  
 Photomontage of the proposed eastern substation and National Grid GIS substation

View flat at a comfortable arm's length

<b>OS reference:</b>	640884 E 261654 N	<b>Horizontal field of view:</b>	53.5° (planar projection)	<b>Camera:</b>	Canon EOS 5D Mark II
<b>Eye level:</b>	25 m AOD	<b>Principal viewing distance:</b>	812.5 mm	<b>Lens:</b>	50mm (Canon EF 50mm f/1.4)
<b>Direction of view:</b>	159.15°	<b>Paper size:</b>	841 x 297 mm (half A1)	<b>Camera height:</b>	1.5 m AGL
		<b>Correct printed image size:</b>	820 x 260 mm	<b>Date and time:</b>	22/02/2020, 13:47:28

Contains Ordnance Survey digital data © Crown copyright, All rights reserved 2020 Licence number 0100031673

**Figure: 29.37b**  
**Viewpoint 5: Public Right of Way, near Moor Farm**



Visual representation of 15th year of operational phase  
 Photomontage of the proposed eastern substation and National Grid GIS substation

View flat at a comfortable arm's length

<b>OS reference:</b>	640884 E 261654 N	<b>Horizontal field of view:</b>	53.5° (planar projection)	<b>Camera:</b>	Canon EOS 5D Mark II
<b>Eye level:</b>	25 m AOD	<b>Principal viewing distance:</b>	812.5 mm	<b>Lens:</b>	50mm (Canon EF 50mm f/1.4)
<b>Direction of view:</b>	105.65°	<b>Paper size:</b>	841 x 297 mm (half A1)	<b>Camera height:</b>	1.5 m AGL
		<b>Correct printed image size:</b>	820 x 260 mm	<b>Date and time:</b>	22/02/2020, 13:47:28

Contains Ordnance Survey digital data © Crown copyright, All rights reserved 2020 Licence number 0100031673

**Figure: 29.37c**  
 Viewpoint 5: Public Right of Way, near Moor Farm



Visual representation of 15th year of operational phase  
 Photomontage of the proposed eastern substation and National Grid GIS substation

View flat at a comfortable arm's length

<b>OS reference:</b>	640884 E 261654 N	<b>Horizontal field of view:</b>	53.5° (planar projection)	<b>Camera:</b>	Canon EOS 5D Mark II
<b>Eye level:</b>	25 m AOD	<b>Principal viewing distance:</b>	812.5 mm	<b>Lens:</b>	50mm (Canon EF 50mm f/1.4)
<b>Direction of view:</b>	159.15°	<b>Paper size:</b>	841 x 297 mm (half A1)	<b>Camera height:</b>	1.5 m AGL
		<b>Correct printed image size:</b>	820 x 260 mm	<b>Date and time:</b>	22/02/2020, 13:47:28

Contains Ordnance Survey digital data © Crown copyright, All rights reserved 2020 Licence number 0100031673

**Figure: 29.37c**  
 Viewpoint 5: Public Right of Way, near Moor Farm





Visual representation of 1st year of operational phase  
 Photomontage of the proposed eastern substation, western substation and National Grid GIS substation

View flat at a comfortable arm's length

<b>OS reference:</b>	640884 E 261654 N	<b>Horizontal field of view:</b>	53.5° (planar projection)	<b>Camera:</b>	Canon EOS 5D Mark II
<b>Eye level:</b>	25 m AOD	<b>Principal viewing distance:</b>	812.5 mm	<b>Lens:</b>	50mm (Canon EF 50mm f/1.4)
<b>Direction of view:</b>	105.65°	<b>Paper size:</b>	841 x 297 mm (half A1)	<b>Camera height:</b>	1.5 m AGL
		<b>Correct printed image size:</b>	820 x 260 mm	<b>Date and time:</b>	22/02/2020, 13:47:28

Contains Ordnance Survey digital data © Crown copyright, All rights reserved 2020 Licence number 0100031673

**Figure: 29.37d**  
**Viewpoint 5: Public Right of Way, near Moor Farm**



Visual representation of 1st year of operational phase  
 Photomontage of the proposed eastern substation, western substation and National Grid GIS substation

View flat at a comfortable arm's length

<b>OS reference:</b>	640884 E 261654 N	<b>Horizontal field of view:</b>	53.5° (planar projection)	<b>Camera:</b>	Canon EOS 5D Mark II
<b>Eye level:</b>	25 m AOD	<b>Principal viewing distance:</b>	812.5 mm	<b>Lens:</b>	50mm (Canon EF 50mm f/1.4)
<b>Direction of view:</b>	159.15°	<b>Paper size:</b>	841 x 297 mm (half A1)	<b>Camera height:</b>	1.5 m AGL
		<b>Correct printed image size:</b>	820 x 260 mm	<b>Date and time:</b>	22/02/2020, 13:47:28

Contains Ordnance Survey digital data © Crown copyright, All rights reserved 2020 Licence number 0100031673

**Figure: 29.37d**  
**Viewpoint 5: Public Right of Way, near Moor Farm**



Visual representation of 15th year of operational phase  
 Photomontage of the proposed eastern substation, western substation and National Grid GIS substation

View flat at a comfortable arm's length

<b>OS reference:</b>	640884 E 261654 N	<b>Horizontal field of view:</b>	53.5° (planar projection)	<b>Camera:</b>	Canon EOS 5D Mark II
<b>Eye level:</b>	25 m AOD	<b>Principal viewing distance:</b>	812.5 mm	<b>Lens:</b>	50mm (Canon EF 50mm f/1.4)
<b>Direction of view:</b>	105.65°	<b>Paper size:</b>	841 x 297 mm (half A1)	<b>Camera height:</b>	1.5 m AGL
		<b>Correct printed image size:</b>	820 x 260 mm	<b>Date and time:</b>	22/02/2020, 13:47:28

Contains Ordnance Survey digital data © Crown copyright, All rights reserved 2020 Licence number 0100031673

**Figure: 29.37e**  
**Viewpoint 5: Public Right of Way, near Moor Farm**



Visual representation of 15th year of operational phase  
 Photomontage of the proposed eastern substation, western substation and National Grid GIS substation

View flat at a comfortable arm's length

<b>OS reference:</b>	640884 E 261654 N	<b>Horizontal field of view:</b>	53.5° (planar projection)	<b>Camera:</b>	Canon EOS 5D Mark II
<b>Eye level:</b>	25 m AOD	<b>Principal viewing distance:</b>	812.5 mm	<b>Lens:</b>	50mm (Canon EF 50mm f/1.4)
<b>Direction of view:</b>	159.15°	<b>Paper size:</b>	841 x 297 mm (half A1)	<b>Camera height:</b>	1.5 m AGL
		<b>Correct printed image size:</b>	820 x 260 mm	<b>Date and time:</b>	22/02/2020, 13:47:28

Contains Ordnance Survey digital data © Crown copyright, All rights reserved 2020 Licence number 0100031673

**Figure: 29.37e**  
 Viewpoint 5: Public Right of Way, near Moor Farm



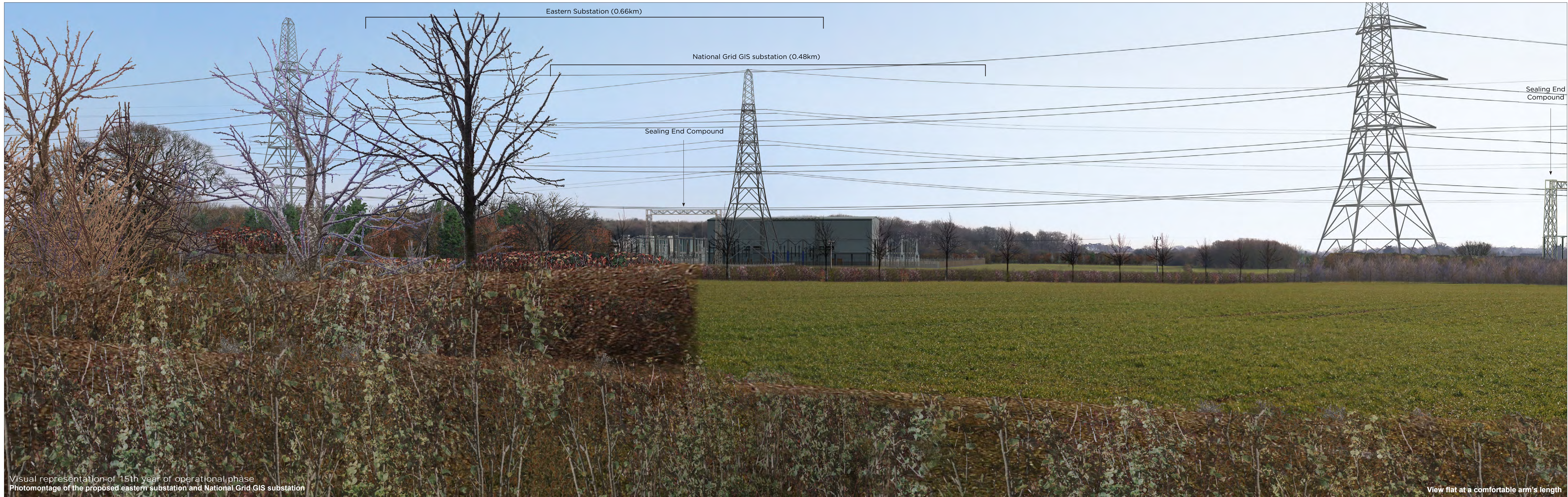
Visual representation of 1st year of operational phase  
 Photomontage of the proposed eastern substation, western substation and National Grid GIS substation

View flat at a comfortable arm's length

<b>OS reference:</b>	640884 E 261654 N	<b>Horizontal field of view:</b>	53.5° (planar projection)	<b>Camera:</b>	Canon EOS 5D Mark II
<b>Eye level:</b>	25 m AOD	<b>Principal viewing distance:</b>	812.5 mm	<b>Lens:</b>	50mm (Canon EF 50mm f/1.4)
<b>Direction of view:</b>	132°	<b>Paper size:</b>	841 x 297 mm (half A1)	<b>Camera height:</b>	1.5 m AGL
		<b>Correct printed image size:</b>	820 x 260 mm	<b>Date and time:</b>	22/02/2020, 13:47:28

Contains Ordnance Survey digital data © Crown copyright, All rights reserved 2020 Licence number 0100031673

**Figure: 29.37f**  
**Viewpoint 5: Public Right of Way, near Moor Farm**



Visual representation of 15th year of operational phase  
 Photomontage of the proposed eastern substation and National Grid GIS substation

View flat at a comfortable arm's length

<b>OS reference:</b>	640884 E 261654 N	<b>Horizontal field of view:</b>	53.5° (planar projection)	<b>Camera:</b>	Canon EOS 5D Mark II
<b>Eye level:</b>	25 m AOD	<b>Principal viewing distance:</b>	812.5 mm	<b>Lens:</b>	50mm (Canon EF 50mm f/1.4)
<b>Direction of view:</b>	132°	<b>Paper size:</b>	841 x 297 mm (half A1)	<b>Camera height:</b>	1.5 m AGL
		<b>Correct printed image size:</b>	820 x 260 mm	<b>Date and time:</b>	22/02/2020, 13:47:28

Contains Ordnance Survey digital data © Crown copyright, All rights reserved 2020 Licence number 0100031673

**Figure: 29.37g**  
**Viewpoint 5: Public Right of Way, near Moor Farm**



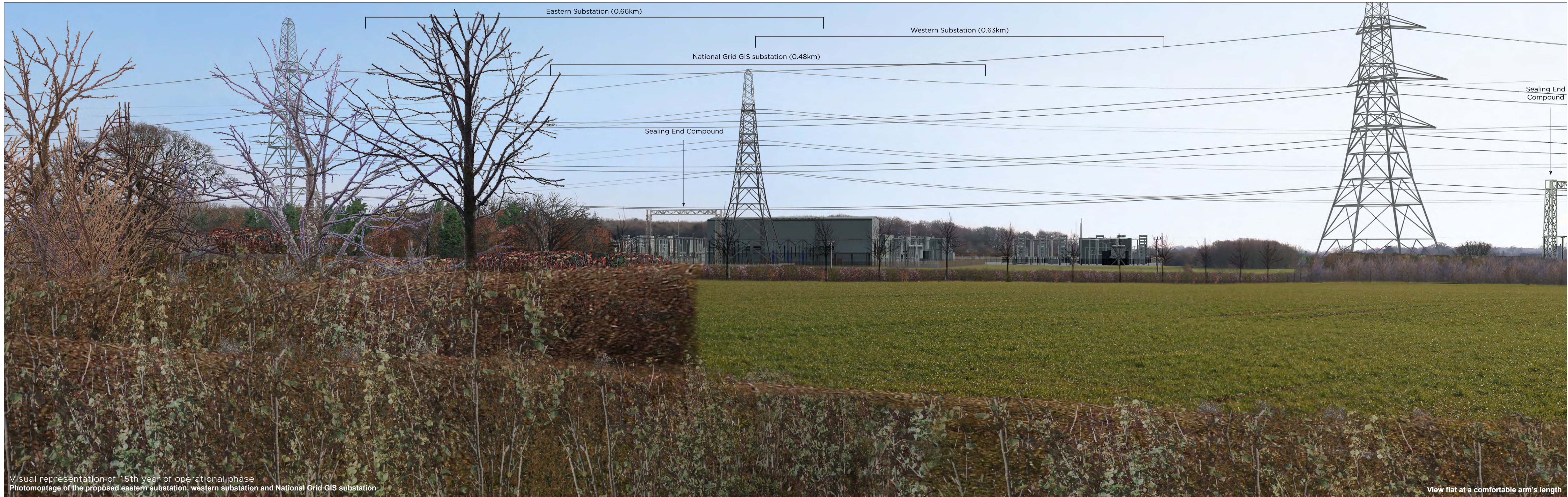
Visual representation of 1st year of operational phase  
 Photomontage of the proposed eastern substation, western substation and National Grid GIS substation

View flat at a comfortable arm's length

<b>OS reference:</b>	640884 E 261654 N	<b>Horizontal field of view:</b>	53.5° (planar projection)	<b>Camera:</b>	Canon EOS 5D Mark II
<b>Eye level:</b>	25 m AOD	<b>Principal viewing distance:</b>	812.5 mm	<b>Lens:</b>	50mm (Canon EF 50mm f/1.4)
<b>Direction of view:</b>	132°	<b>Paper size:</b>	841 x 297 mm (half A1)	<b>Camera height:</b>	1.5 m AGL
		<b>Correct printed image size:</b>	820 x 260 mm	<b>Date and time:</b>	22/02/2020, 13:47:28

Contains Ordnance Survey digital data © Crown copyright, All rights reserved 2020 Licence number 0100031673

**Figure: 29.37h**  
 Viewpoint 5: Public Right of Way, near Moor Farm



Visual representation of 15th year of operational phase  
 Photomontage of the proposed eastern substation, western substation and National Grid GIS substation

View flat at a comfortable arm's length

<b>OS reference:</b>	640884 E 261654 N	<b>Horizontal field of view:</b>	53.5° (planar projection)	<b>Camera:</b>	Canon EOS 5D Mark II
<b>Eye level:</b>	25 m AOD	<b>Principal viewing distance:</b>	812.5 mm	<b>Lens:</b>	50mm (Canon EF 50mm f/1.4)
<b>Direction of view:</b>	132°	<b>Paper size:</b>	841 x 297 mm (half A1)	<b>Camera height:</b>	1.5 m AGL
		<b>Correct printed image size:</b>	820 x 260 mm	<b>Date and time:</b>	22/02/2020, 13:47:28

Contains Ordnance Survey digital data © Crown copyright, All rights reserved 2020 Licence number 0100031673

**Figure: 29.37i**  
**Viewpoint 5: Public Right of Way, near Moor Farm**